

Welcome to YFi2TV

(80.211n/Full HD/HDMI Output/Support DLNA)



1. Introduction

YFi2TV built in 802.11n Wi-Fi module. It can connect USB mouse and keyboard. **YFi2TV** can convert PC's screen to HDMI output via Wi-Fi Adapter, and the resolution supports up to 1920 x1080. You can play movies in PC and watch high quality Full HD movies in TV.

YFi2TV is designed to be a DLNA-DMR (digital media renderer), and you are able stream contents from PC (Windows 7 based), smart phone, and Tablet-PC to your TV through this device.

2. Product Features

1. Built In 802.11n Wi-Fi module
2. 2.4GHz Antenna inside
3. Converts PC's Screen to HDMI Output via Wi-Fi Adapter
4. Compliant with DLNA(Windows 7 Only)
 - a. 5. Full HD Resolution (1920*1080)
 - a. 2nd Generation Intel Core i3 / i5 / i7 series (**SandyBridge**) with CPU integrated graphic
 - b. Windows 7 with "Aero Themes"
 - c. 2GB RAM
 - d. 802.11n Wireless Adapter

3. Hardware & Software Requirements

3.1 Operation System Support

Windows 7, x86 and x64 (Recommendation)

Windows Vista (Service Pack 1 or later), x86 and x64

Windows XP (Service Pack 3 or later), x86 and x64

3.2 Hardware Support

3.2.1 Desktop / Workstation PC

CPU : Intel Core 2 Duo 2.0GHz or better

Chipset : Intel 965 series chipset or better

Memory : DDR2-800, 2GB or better

Graphic Card : NVIDIA GeForce 7300 GS/ATI Radeon X300 or better

Network : 802.11n Wireless USB Adapter

HD : 50MB HD space or above

3.2.2 Notebook / Laptop PC

CPU : Intel Core 2 Duo 2.0GHz or better

Chipset : Intel 965 series chipset or better

Memory : DDR2-800, 2GB or better

Graphic : Chipset integrated (Intel GMA X3100) or better or NVIDIA

GeForce Go 6600/ATI Radeon Mobility X700 standalong

graphic chip or better

Network : 802.11n Wireless USB Adapter

HD : 50MB HD space or above

3.2.3 Tablet-PC

CPU : 800 MHz or better

Memory : 256 MB or better

Network : 802.11g/n Wi-Fi or better

3.2.4 Smart Phone

CPU : 800 MHz or better

Memory : 256 MB or better

Network : 802.11g/n Wi-Fi or better

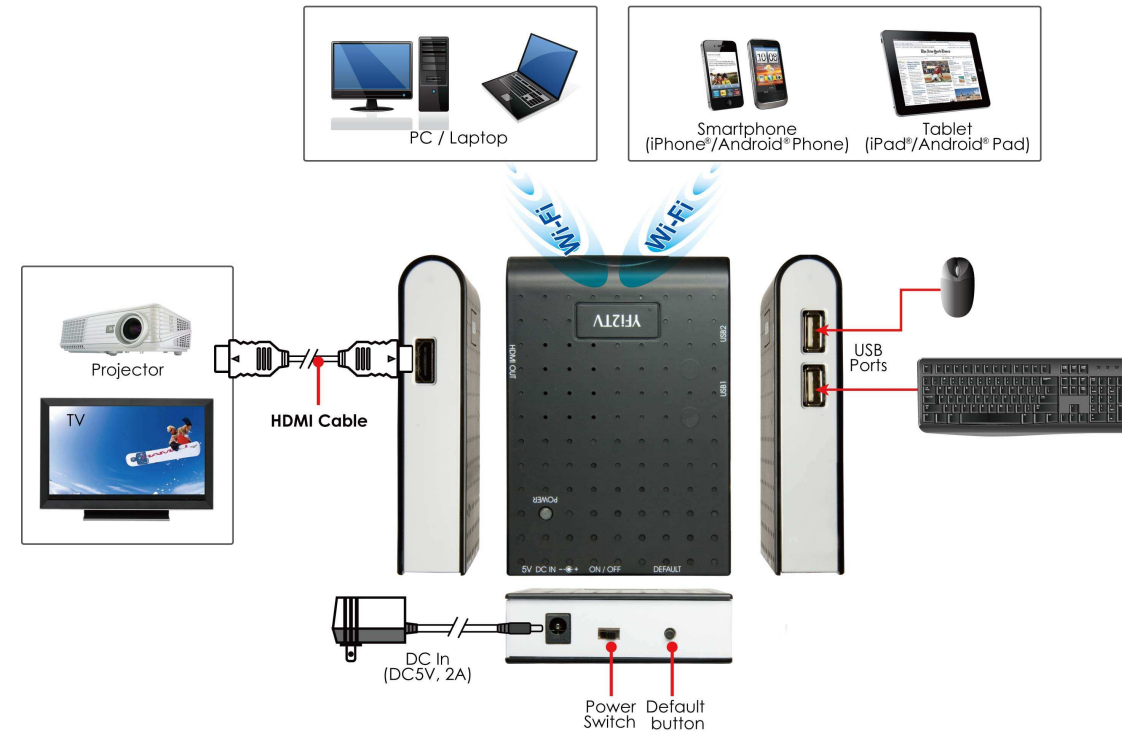
3.3 USB Devices

USB HID : Mouse / Keyboard

4. Package Contents

1. Grand YFi2TV
2. Quick Installation
3. CD Driver
4. DC Power Adapter (-) ← (● → (+), DC 5V/2A

5. Hardware Connection and Application



6. Appendix

The following table shows the reference platform to support the appropriate media content type and maximum PC's desktop resolution at "Movie" Mode.

CPU & Graphic	RAM	Network	OS & Desktop Theme	Video/Movie Content	Max. Desktop Resolution
2nd Generation Intel Core i3 / i5 / i7 series (SandyBridge) with CPU integrated graphic	2GB	802.11n Wi-Fi	Windows 7 with "Aero Themes"	Mpeg4/H.264, 1080P	1,920 x 1,080¹
Intel Core i3 / i5 / i7 2.0G per core with standalone graphic chip	2GB	802.11n Wi-Fi	Windows 7 with "Aero Themes"	Mpeg4/H.264, 720P	1,440 x 900(wide) 1,280 x 1,024
Intel Core 2 Duo 2.4G with standalone graphic chip	2GB	802.11n Wi-Fi	Windows 7 with "Aero Themes" or Windows XP	Mpeg4/H.264, 720P	1,280 x 800 1,280 x 720
Intel Core 2 Duo 2.0G with chipset integrated graphic	1GB	802.11b/g Wi-Fi	Windows 7 with "Basic and High Contrast Themes" or Windows XP	DVD/Mpeg2, 480P	1,024 x 768