

FOR APPROVAL

MODEL : HC5011A1

Customer: _____

RECEIPT STATUS

RECEIVED

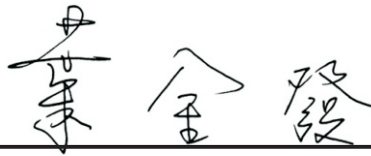
By Date

Signature

Name

Time

Approved



Checked





韋拓股份有限公司



Model	HC5011A1
Version	1
Total Pages	6
Date	MAR.03,2009

CONTENTS

1. Application	3
2. Specifications	3
3. Optical Specifications.....	3
4. Connector	4
5. Inspection Standard.....	5
6. Mechanical Drawing.....	6

1. Application

5" Color TFT LCD Monitor Kits is subject to car monitor, TV monitor and other industrial Equipment. The model name is HC5011A1.

2. Specifications

2-1	Display	5" color TFT LCD												
2-2	Resolution	960 (H) x 234 (V)												
2-3	Action Area	102.72 (H) x 74.529 (V)												
2-4	Dot Pitch	0.321 (H) x 0.3185 (V)												
2-5	Pixel Configuration	Stripe												
2-6	Back light	15-LED												
2-7	Input Signal	NTSC & PAL (auto-switch) composite video signal 1Vp-p / 75 ohm sync.Negative												
		<table> <thead> <tr> <th></th> <th>NTSC</th> <th>PAL</th> </tr> </thead> <tbody> <tr> <td>f_H</td> <td>15.75 KHz</td> <td>15.625 KHz</td> </tr> <tr> <td>f_V</td> <td>60 Hz</td> <td>50 Hz</td> </tr> <tr> <td>f_C</td> <td>3.58 MHz</td> <td>4.43 MHz</td> </tr> </tbody> </table>		NTSC	PAL	f_H	15.75 KHz	15.625 KHz	f_V	60 Hz	50 Hz	f_C	3.58 MHz	4.43 MHz
	NTSC	PAL												
f_H	15.75 KHz	15.625 KHz												
f_V	60 Hz	50 Hz												
f_C	3.58 MHz	4.43 MHz												
2-8	Power Source	DC 12V ~ 24V (ripple 0.5 Vp-p max.)												
2-9	Range of Operating Voltage	DC 10V ~ 24V												
2-10	Power Consumption	3.5W max.												
2-11	Operating Temperature	-20°C~70°C												
2-12	Storage Temperature	-30°C~80°C												
2-13	Operating Humidity	max.85% RH												
2-14	Storage Humidity	max.85% RH												
2-15	Overall Dimension	125.6 (W) x 98.9 (H) x 23.1 (D)												
2-16	Weight	190 ± 5 g												

3. Optical Specifications

3-1	Lamp Life-time	20,000 hr min. (at Tamb=25°C)
3-2	Typ. Viewing Angle	Right 70 deg Left 70 deg Top 40 deg Bottom 60 deg
3-3	Brightness	Typ. 250 cd/m ²
3-4	Contrast Ratio	Typ. 200

4. Connector

4-1 Harness connector : pitch 2mm, length 300mm

4-2 Pin Assignment

CN1 (5 pin)

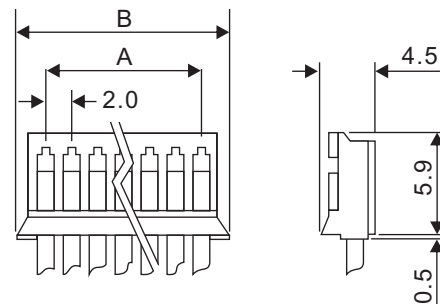
Pin	Parameter	Color of Wire	Voltage	
			Min.	Max.
1	DC input (Vcc)	Red	10V	24V
2	Ground	Black	-----	-----
3	(empty)	-----	-----	-----
4	(empty)	-----	-----	-----
5	(empty)	-----	-----	-----

CN2 (4 pin)

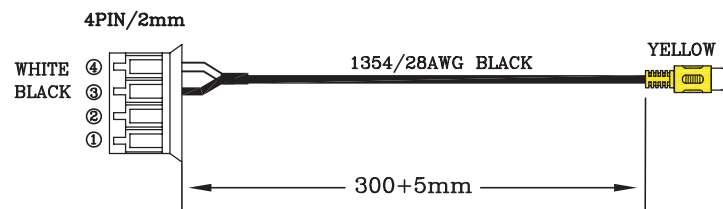
Pin	Parameter	Color of Wire	Voltage	
			Min.	Max.
1	(empty)	-----	-----	-----
2	(empty)	-----	-----	-----
3	Ground	Black	-----	-----
4	Signal	White	0.8Vp-p	1.2Vp-p

Dimension of Pins :

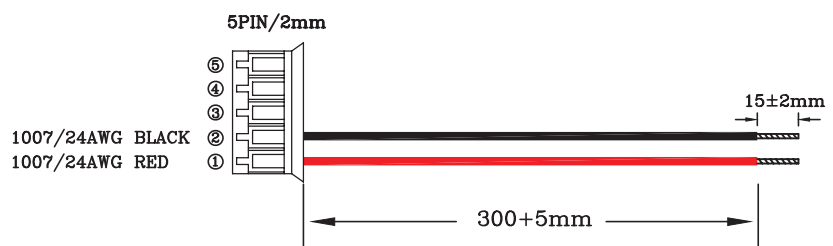
	A	B
CN1	8.0mm	11.8mm
CN10	6.0mm	9.8mm



■ Line (L-40)



■ Line (L-41)



5. Inspection Standard

5-1 Classification of Defects

5-1-1 Dot defect

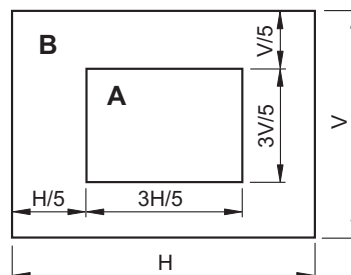
a). Inspection condition

- Inspection distance : 35 ± 5 cm
- Inspection illumination : 100 ~ 150 Lux
- Panel temperature : $30 \pm 5^\circ\text{C}$
- Inspection pattern : full white, full black, red, green and blue screens

b). Acceptable criteria

Item	Area		Total
	A	B	
Blue Black	2	3	4
Red Green White	1	3	3
Total	2	5	7

c). The definitions of A and B zone



5-1-2 Scratch on the polarizer

Number = 3 max.

Width ≤ 0.1 mm , Length ≤ 6 mm

5-1-3 Dent on the polarizer

Number = 3 max. , Average Diameter ≤ 0.3 mm

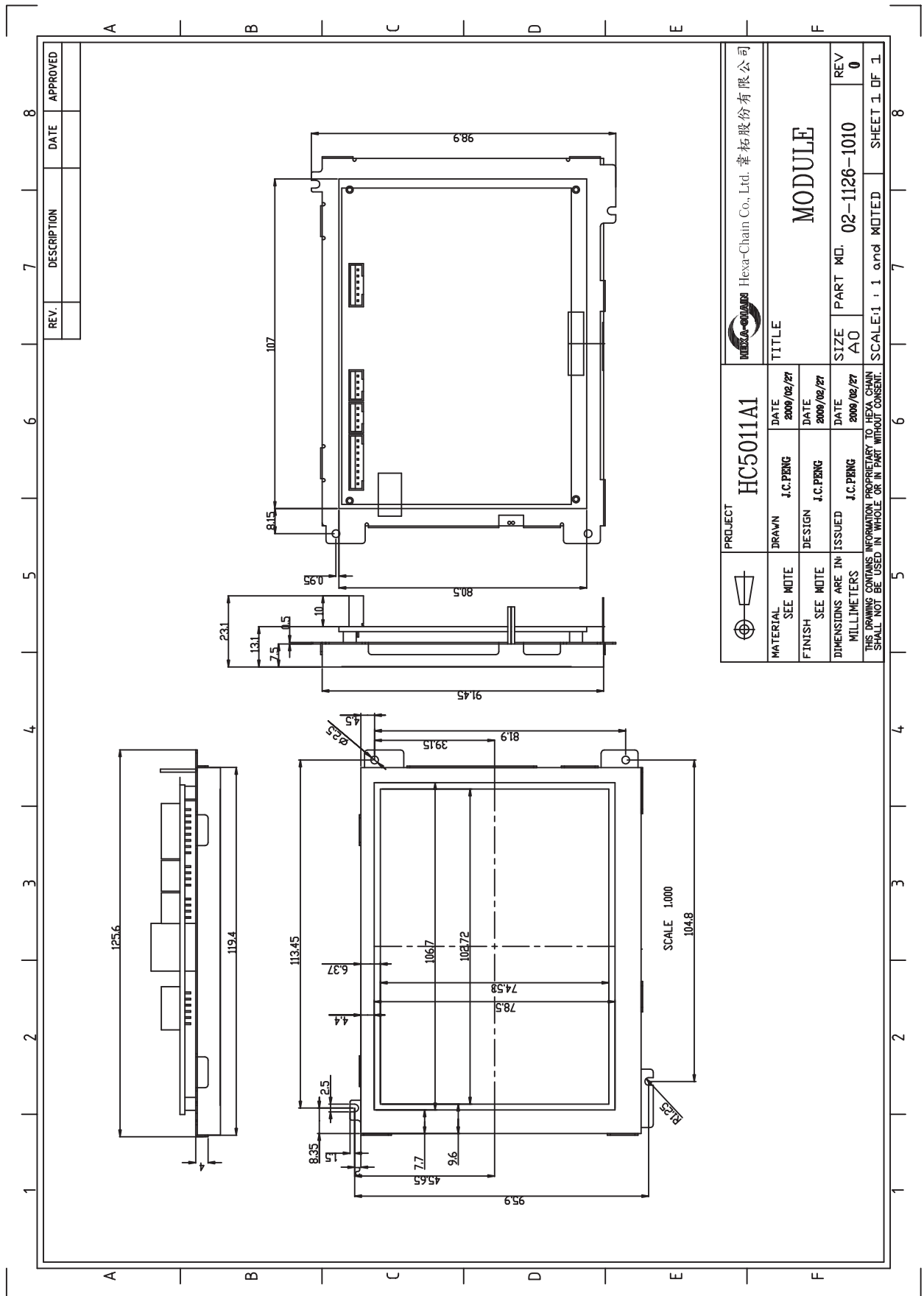
5-1-4 Foreign material on the polarizer

Number = 2 max. , Average Diameter ≤ 0.5 mm

5-1-5 Afterimage

After displaying a pattern for 5 seconds then switch to a different pattern, the previous pattern should disappear within 10 seconds.

6.Mechanical Drawing



REV.	DESCRIPTION	DATE	APPROVED

		Hexa-Chain Co., Ltd. 韋拓股份有限公司	
PROJECT HC5011A1		TITLE MODULE	
MATERIAL SEE NOTE	DRAWN J.C.PENG	DATE 2009/02/27	REV 0
FINISH SEE NOTE	DESIGN J.C.PENG	DATE 2009/02/27	SIZE A0
DIMENSIONS ARE IN MILLIMETERS	ISSUED J.C.PENG	DATE 2009/02/27	PART NO. 02-1126-1010
THIS DRAWING CONTAINS INFORMATION PROPRIETARY TO HEXA CHAIN SHALL NOT BE USED IN WHOLE OR IN PART WITHOUT CONSENT.			SCALE: 1 : 1 and NOTED SHEET 1 OF 1