

FOR APPROVAL  
**MODEL : HC4501A**

Customer :

---

RECEIPT STATUS

RECEIVED

By Date

Signature

Name

Time

Approved by	Checked by	Model	HC4501A
沈文烟	李宜成	Version	1
		Total Pages	6
		Date	AUG.12,2004



韋拓股份有限公司  
HEXA-CHAIN CO., LTD.

# CONTENTS

---

- 1. Scope of Work**
- 2. Specifications**
- 3. Optical Specifications**
- 4. Connector**
- 5. Inspection Standard**
- 6. VR Location**

## 1. Scope of Work

This specification shall be applied to model : HC4501A, 4.5" color TFT LCD module

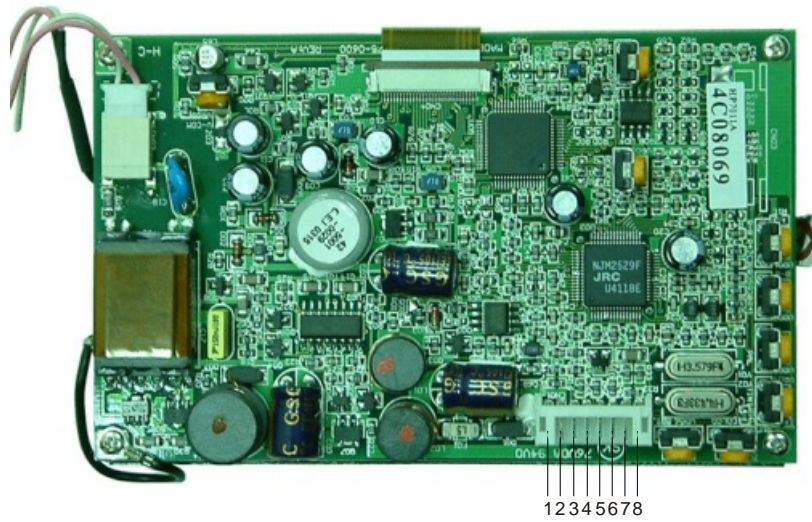
## 2. Specifications

2-1	Display	:	4.5" color TFT LCD (16:9)
2-2	Resolution	:	960(H) x 234(V)
2-3	Action Area	:	99.36(H) x 56(V)
2-4	Dot Pitch	:	0.1035(H) x 0.2395(V)
2-5	Pixel Configuration	:	R.G.B Stripe
2-6	Back Light	:	CCFL
2-7	Input Signal	:	NTSC & PAL (auto-switch) composite video signal 1 Vp-p / 75 ohm sync. Negative
			NTSC                      PAL
	$fH$	:	15.75 KHz              15.625 KHz
	$fV$	:	60 Hz                      50 Hz
	$fC$	:	3.58 MHz              4.43 MHz
2-8	Power Source	:	DC 12 V ~ 24 V ( ripple 0.5 Vp-p max. )
2-9	Range of Operating Voltage	:	DC 10 V ~ 30 V
2-10	Power Consumption	:	7 W max.
2-11	Operating Temperature	:	-10°C ~ 60°C
2-12	Storage Temperature	:	-10°C ~ 70°C
2-13	Operating Humidity	:	Max. 85% RH
2-14	Storage Humidity	:	Max. 85% RH
2-15	Overall Dimension	:	111.5(W) x 69.5(H) x 20(D)
2-16	Weight	:	157 ± 5 g

## 3. Optical Specifications

3-1	Lamp Life-time	:	20,000 hr min. ( at Tamb = 25°C )
3-2	Typ. Viewing Angle	:	Right      50 deg Left        50 deg Top        15 deg Bottom    35 deg
3-3	Brightness	:	Typ. 400 cd/m <sup>2</sup>
3-4	Contrast Ratio	:	Typ. 150

## 4. Connector



● CN01 Pitch : 2m/m 8Pin

PIN NO.	Parameter	Color of Wire	Voltage		Current	
			Min.	Max.	Min.	Max.
1	Ground	Black	-----	-----	-----	-----
2	DC input	Red	10V	30V	0.8A	-----
3	-----	-----	-----	-----	-----	-----
4	-----	-----	-----	-----	-----	-----
5	-----	-----	-----	-----	-----	-----
6	-----	-----	-----	-----	-----	-----
7	Ground	Black	-----	-----	-----	-----
8	Video	White	0.8V	1.2V	-----	-----

## 5. Inspection Standard

5-1 Inspection environment conditions

5-1-1 Room temperature : 20 ~ 25 °C

5-1-2 Humidity : 65 ± 5% RH

5-1-3 The viewing line should be perpendicular to the surface of screen.

5-2 Classification of Defects

5-2-1 Dot defect

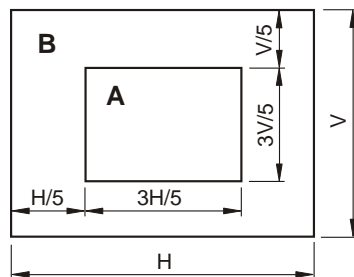
a). Inspection condition

- Inspection distance :  $35 \pm 5$  cm
- Inspection illumination : 100 ~ 150 Lux
- Panel temperature :  $30 \pm 5^\circ\text{C}$
- Inspection pattern : full white, full black, red, green and blue screens

b). Acceptable criteria

Ltem	Area		Total
	A	B	
Blue Black	2	3	4
Red Green White	1	3	3
Total	2	5	7

c). The definitions of A and B zone



5-2-2 Scratch on the polarizer

Number = 3 max.

Width  $\leq 0.1$  mm , Length  $\leq 6$  mm

5-2-3 Dent on the polarizer

Number = 3 max. , Average Diameter  $\leq 0.3$  mm

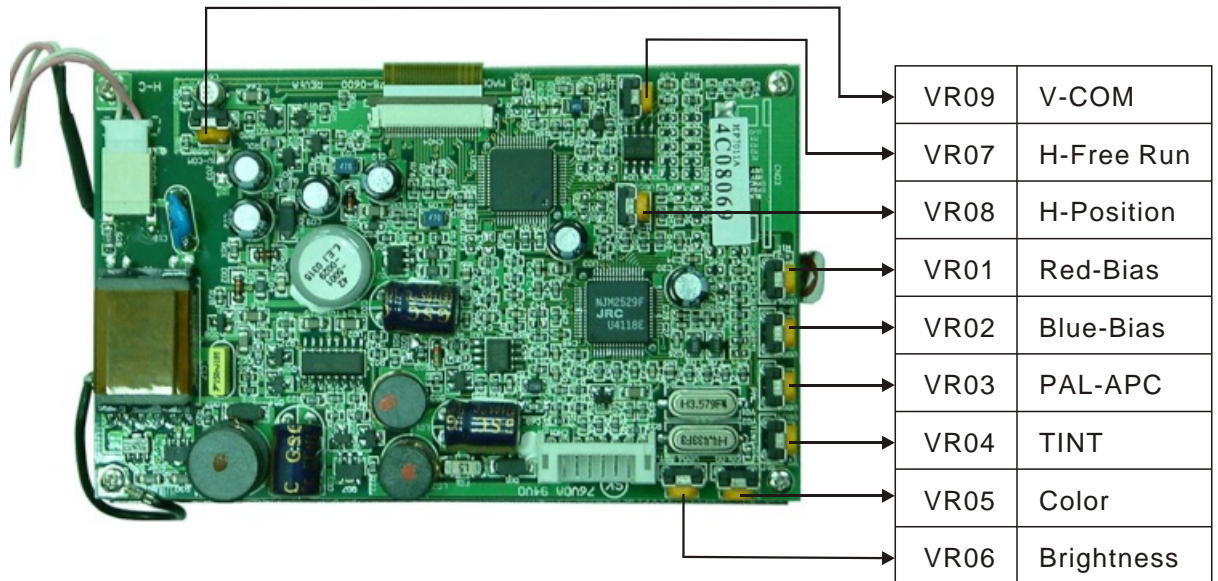
5-2-4 Foreign material on the polarizer

Number = 2 max. , Average Diameter  $\leq 0.5$  mm

5-2-5 Afterimage

After displaying a pattern for 5 seconds then switch to a different pattern, the previous pattern should disappear within 10 seconds.

## 6. VR Location



Don't tune VR01/VR02/VR03/VR04/VR07/VR08/VR09  
Those VRS are tuned by authorized engineer only.

